

# Planning Committee Meeting

## 9<sup>th</sup> June 2021

Full planning permission for the demolition of the existing buildings and erection of 88no. dwellings with access, landscaping, a public open space and associated works

Vale Drive Estate, Vale Drive, Oldham

Application No. FUL/346270/21

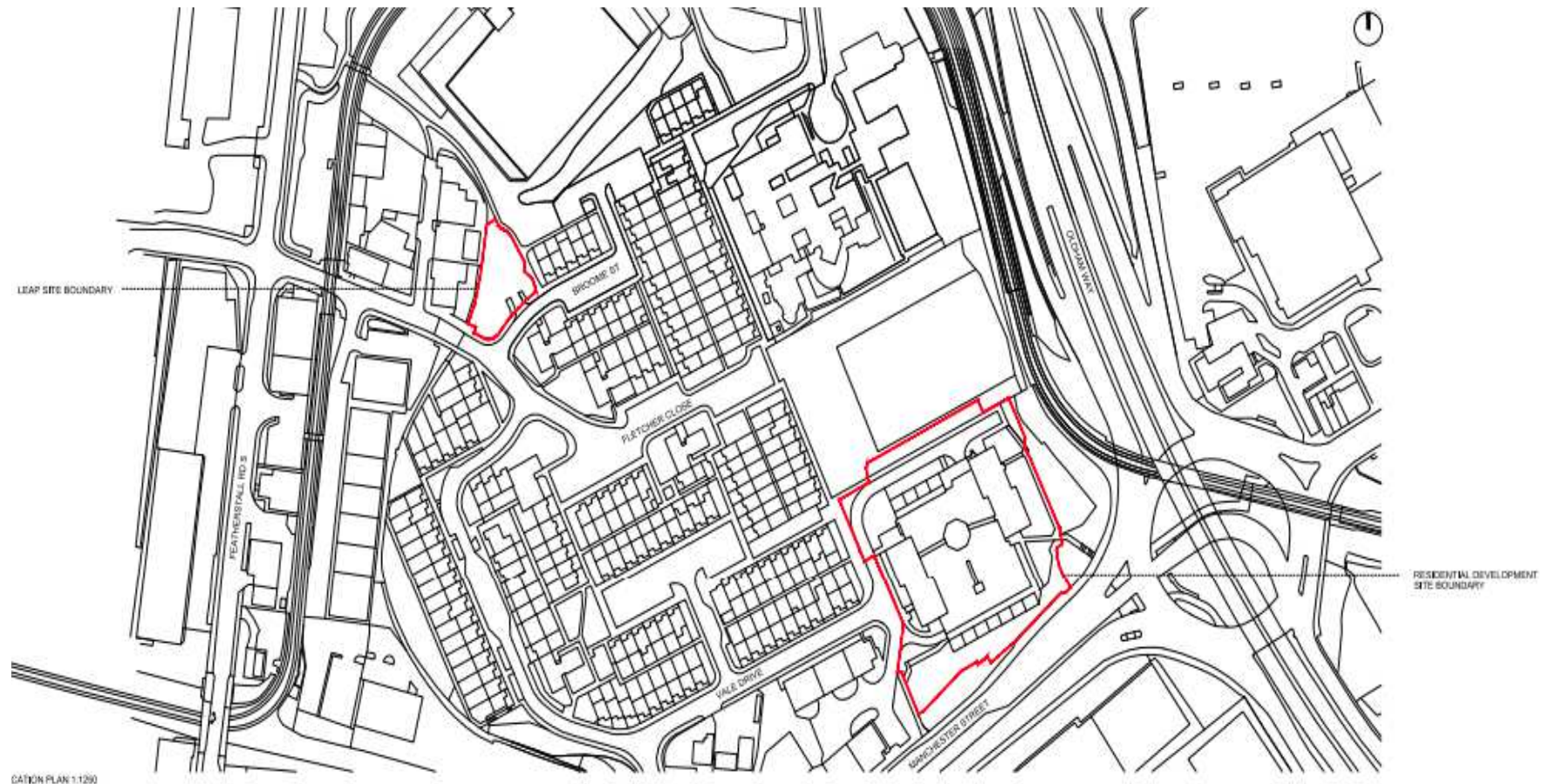


---

## Aerial view

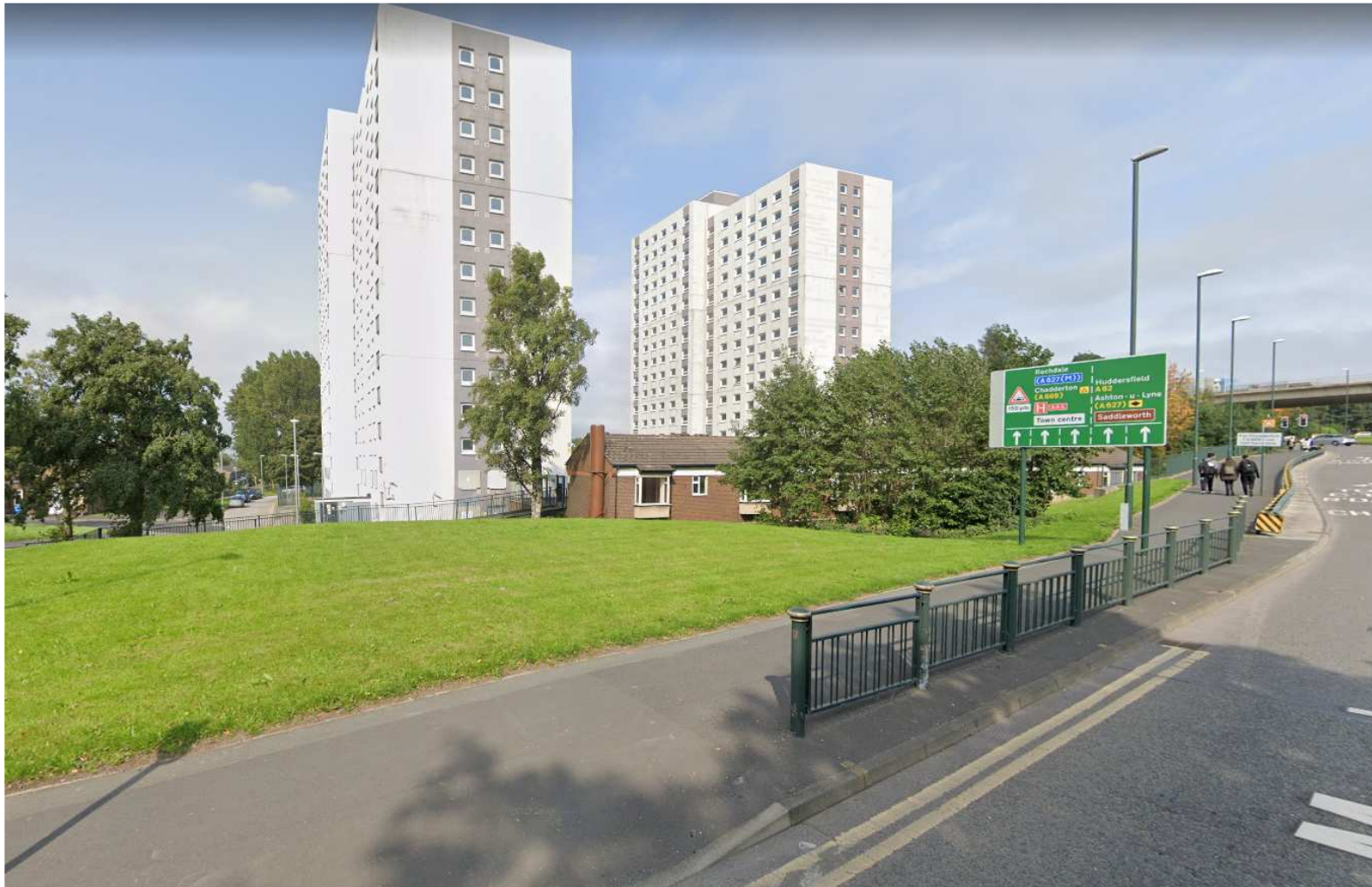


# Site boundary



---

# Site view from Manchester Street



---

## View from Oldham Way



---

## View from Vale Drive to Manchester Street



---

## Existing view from Vale Drive



# Proposed site layout





# Proposed Apartment Building



---

# Proposed Street Scenes

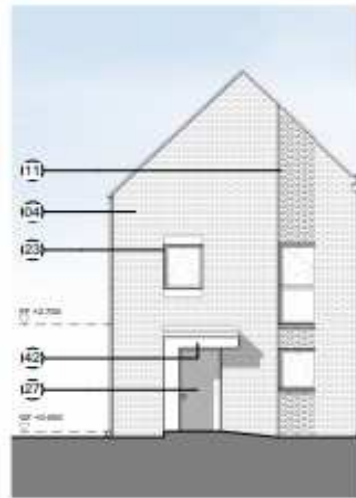


Street Scene C-C  
1:50

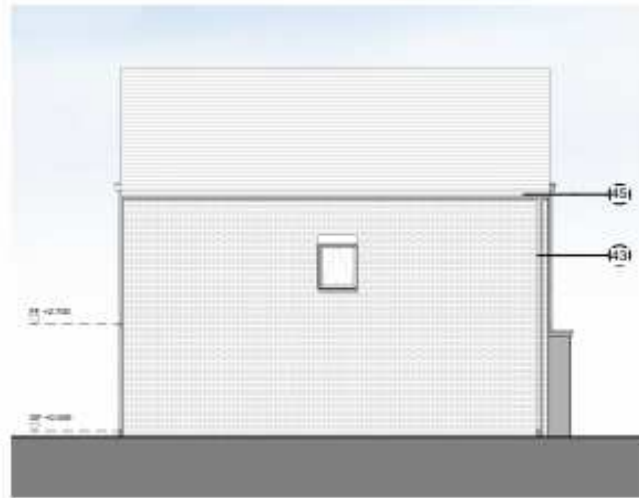


Street Scene D-D  
1:50

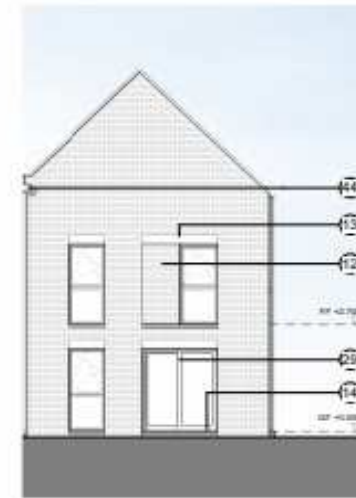
# Example House Type – 4 bed home



Front Elevation  
1:100



Side Elevation  
1:100



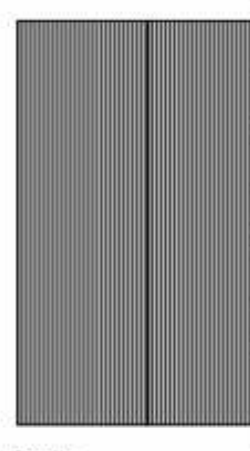
Rear Elevation  
1:100



Ground Floor Plan  
1:100



First Floor Plan  
1:100



Roof Plan  
1:100

Material Finishes	
No.	Item
10	External Solid Brick Finish to External Wall (M250) (200)
11	Brick Chimney, External Solid Brick
12	Brick Downpipes, External Solid Brick
13	Brick Gable End Finish to External Wall (200)
14	Brick Chimney (Solid Brick) (200) (200) (200)
15	Brick Gable End Finish to External Wall (200)
16	Brick Gable End Finish to External Wall (200)
17	Brick Gable End Finish to External Wall (200)
18	Brick Gable End Finish to External Wall (200)
19	Brick Gable End Finish to External Wall (200)
20	Brick Gable End Finish to External Wall (200)
21	Brick Gable End Finish to External Wall (200)
22	Brick Gable End Finish to External Wall (200)
23	Brick Gable End Finish to External Wall (200)
24	Brick Gable End Finish to External Wall (200)
25	Brick Gable End Finish to External Wall (200)
26	Brick Gable End Finish to External Wall (200)
27	Brick Gable End Finish to External Wall (200)
28	Brick Gable End Finish to External Wall (200)
29	Brick Gable End Finish to External Wall (200)
30	Brick Gable End Finish to External Wall (200)

The contractor is responsible for checking dimensions, structures and materials. See specification for additional notes and standards. All dimensions are in millimetres unless otherwise stated. All dimensions are to the face of the work unless otherwise stated. All dimensions are to the face of the work unless otherwise stated. All dimensions are to the face of the work unless otherwise stated.

Rev. Date Description  
A 2011.03 Floor Plan  
B 2011.03 Internal Arrangement and Structure Revised  
C 2011.03 Revised Layout and Design Process  
D 2011.03 Planning Note

Date: 01/01/2011  
Drawn: JK  
Checked: JK  
Scale: 1:100

VALE DRIVE, OLDHAM  
Type B - 4B5P House

AA8207-2182  
REV C  
PLANNING

PRP  
prp-co.uk  
Manufacture  
0161 342 8888

# Example House Type 2 bed Property



Front Elevation  
1:100



Side Elevation  
1:100



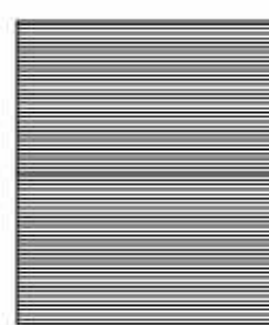
Rear Elevation  
1:100



Ground Floor Plan  
1:100



First Floor Plan  
1:100



Roof Plan  
1:100

The contractor is responsible for checking dimensions, submissions and references. Any discrepancies will be notified with the contractor before construction with the works. Where an error is corrected by drawings in different scales, the larger scale drawing is to be preferred.

Do not scale drawings. Figure dimensions to be used to 0.00 unless stated.

©2018 PRP Ltd. All rights reserved. No part of this document may be reproduced for any purpose without the prior written permission of the Designer. All rights reserved.

All intellectual property rights reserved.

Material Finishes	
No.	Detail
00	Self-Fin. Extern. Stone (Refer to Materials Plan)
01	ASBESTOS
10	Paintwork (Exterior) (Refer to Materials Plan)
11	Paintwork (Interior) (Refer to Materials Plan)
12	Self-Fin. Extern. Stone (Refer to Materials Plan)
13	Self-Fin. Extern. Stone (Refer to Materials Plan)
14	Self-Fin. Extern. Stone (Refer to Materials Plan)
15	Self-Fin. Extern. Stone (Refer to Materials Plan)
16	Self-Fin. Extern. Stone (Refer to Materials Plan)
17	Self-Fin. Extern. Stone (Refer to Materials Plan)
18	Self-Fin. Extern. Stone (Refer to Materials Plan)
19	Self-Fin. Extern. Stone (Refer to Materials Plan)
20	Self-Fin. Extern. Stone (Refer to Materials Plan)
21	Self-Fin. Extern. Stone (Refer to Materials Plan)
22	Self-Fin. Extern. Stone (Refer to Materials Plan)
23	Self-Fin. Extern. Stone (Refer to Materials Plan)
24	Self-Fin. Extern. Stone (Refer to Materials Plan)
25	Self-Fin. Extern. Stone (Refer to Materials Plan)
26	Self-Fin. Extern. Stone (Refer to Materials Plan)
27	Self-Fin. Extern. Stone (Refer to Materials Plan)
28	Self-Fin. Extern. Stone (Refer to Materials Plan)
29	Self-Fin. Extern. Stone (Refer to Materials Plan)
30	Self-Fin. Extern. Stone (Refer to Materials Plan)
31	Self-Fin. Extern. Stone (Refer to Materials Plan)
32	Self-Fin. Extern. Stone (Refer to Materials Plan)
33	Self-Fin. Extern. Stone (Refer to Materials Plan)
34	Self-Fin. Extern. Stone (Refer to Materials Plan)
35	Self-Fin. Extern. Stone (Refer to Materials Plan)
36	Self-Fin. Extern. Stone (Refer to Materials Plan)
37	Self-Fin. Extern. Stone (Refer to Materials Plan)
38	Self-Fin. Extern. Stone (Refer to Materials Plan)
39	Self-Fin. Extern. Stone (Refer to Materials Plan)
40	Self-Fin. Extern. Stone (Refer to Materials Plan)
41	Self-Fin. Extern. Stone (Refer to Materials Plan)
42	Self-Fin. Extern. Stone (Refer to Materials Plan)
43	Self-Fin. Extern. Stone (Refer to Materials Plan)
44	Self-Fin. Extern. Stone (Refer to Materials Plan)
45	Self-Fin. Extern. Stone (Refer to Materials Plan)
46	Self-Fin. Extern. Stone (Refer to Materials Plan)
47	Self-Fin. Extern. Stone (Refer to Materials Plan)
48	Self-Fin. Extern. Stone (Refer to Materials Plan)
49	Self-Fin. Extern. Stone (Refer to Materials Plan)
50	Self-Fin. Extern. Stone (Refer to Materials Plan)

C: 201801 Planning Note JK JK  
 R: 201802 Revised Sited and Design Plan JK JK  
 S: 201803 Revised Sited and Design Plan JK JK  
 P: 201804 Floorplan JK JK  
 Rev. Date Description Size C/A

**VALE DRIVE, OLDHAM**  
 Type C - 2B4P Mews House

AA8207-2103 REV C

PLANNING

Drawn By: Checked By: Date: 01/01/2018 Drawn By: 01/01/2018

**PRP** PR-01-UK  
 Manchester  
 0161 242 8880

---

## Site of proposed play area



# Proposed LEAP Layout

Orientation of site has not been checked, design subject to check before installation

**Equipment List:**

- Bench - SB5057
- Bin - SB5084
- Spring Rider - SB4132
- Roundabout - SB3034
- See-saw - TB7044
- Toddler Swing - TB7034-T
- Junior Swing - TB7034-J
- Multi Play Unit - TB7050
- Multi Play Unit - TB7045

**Legend:**

- Play Area
- Soft Fall
- Boundary
- Path
- Tree
- Light
- Bin
- Bench
- Swing
- See-saw
- Spring Rider
- Roundabout
- Multi Play Unit

**Project Info:**

Client: Vale Drive, Clifton

Project No: Q7567 A

Rev: 1.201521

© 2015 Miracle Design & Play Ltd. All Rights Reserved. This drawing is not to be reproduced without the written consent of Miracle Design & Play Ltd.

EXACT LOCATION OF EQUIPMENT TO BE SPREAD ON SITE. ALL SURFACING TO BE FLAT AND LEVEL. ANY DISCREPANCIES IN LEVELS TO BE REPORTED TO MIRACLE DESIGN & PLAY IMMEDIATELY